

AFTER SALES

SERVICES

Special Periodic Survey

In OTD our core business is Design, Engineering & Aftermarket services for all our Jack-up rigs. We have a dedicated, highly skilled group of professionals who have been involved in the Offshore & Onshore jacking system inspections services for many years.



RPD Verification



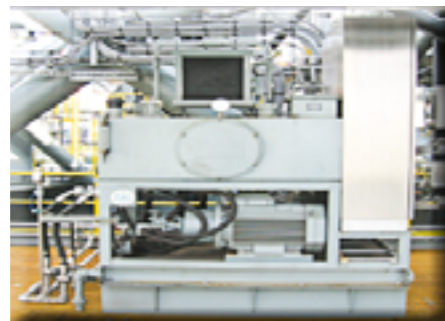
Electrical Insulation Check



Vibration Analysis



Brake Inspection



Fixation Inspection



Brake Torque Check

Why choose OTD?

- With accurate system design information OTD is able to provide a cost effective, hassle-free and complete rig inspection program for you and your crew
- More than 100 jacking systems installed, commissioned and delivered equips OTD with wealth of experience on the systems
- Working closely with ABS classification to ensure that your systems will be approved for class and always up to date to latest changes in requirements
- Valuable system condition data collected from SPS inspection, can enable our aftersales engineer to provide alternative off-site technical support via Customer Care Hot-line to better support rig personnel.

Special Periodic Survey

After 5 years of continual operation of your OTD Systems, a SPS inspection conducted by OTD Aftersales engineer is vital to ensure smooth operation for the next lap of 5 years. OTD as the OEM is capable in maintaining your system uptime by delivering accurate system health assessment with value added support such as in-situ troubleshooting, advice, maintenance & operator training.

Why do Special Periodic Survey

Maintaining a healthy system on board is critical and cost effective. A SPS conducted not only can ensure your systems can increase uptime, but also ensure your crew remains safe. Numerous 3rd party inspector offers general system inspection without design data, inaccurate system health assessment which creates vulnerability to your system's reliability and could incur additional cost in future.

Special periodic survey includes:

- General inspection on jacking gearboxes, brake motors, fixation components, HPU and manifolds.
- Electrical insulation checks on jacking, monitoring system and fixation HPU motors.
- Electrical check on jacking control system and fixation system.
- Brake torque check, disc wear check and internal component inspection.

When to do Special Periodic Survey

- The rig has gone through 5 years or more of operation
- The rig has gone through 10 years or more of operation

Benefits of doing Special Periodic Survey

- In-situ crew system training for rig crew
- Immediate system trouble shooting
- Expert advice and recommendation
- Offer enhanced inspection such as borescope, vibration and thermographic package
- Immediate advice on component replacement
- Next service program arrangement
- Collect system information for 24/7 offline support

For further enquiries please contact us at: service.otd@keppelotd.com



**Offshore Technology
Development**



55 Gul Road, Singapore 629353

Tel : (65) 6863 7409

Fax : (65) 6862 3465

Enquiries : enquiry@keppelotd.com

Support : support.otd@keppelotd.com